





BAYSIDE

A VACATION HOME IN
LONG BEACH ISLAND
CELEBRATES **FAMILY AND
FUN** ON THE WATERFRONT

BOUNTY

WRITER: MEG FOX

PHOTOGRAPHER: JOHN MARTINELLI

INTERIOR DESIGNER: JODY ZAWACKI

ARCHITECT: STUDIO TAGLAND DESIGNS

BUILDER: THOMAS J. KELLER BUILDING CONTRACTOR LLC

LANDSCAPE DESIGNER: REYNOLDS LANDSCAPING AND
GARDEN SHOP

INTERIOR DESIGNER JODY ZAWACKI RECALLS the exterior design inspiration for her clients' bayfront home. The owners commissioned architectural firm Studio Tagland Designs to create a contemporary home with characteristics similar to the Guggenheim Museum in New York City and the Sidney Opera House in Australia. At an initial design meeting, architect Bill Tagland "drew some circles with projections on trace paper and, voila, the beginnings of a journey," says Zawacki, principal of Design Continuum in Mountain Lakes. "I was fortunate to work closely" with the architect and the builder (Thomas J. Keller Building Contractor LLC in Surf City) during the two years it took to build and furnish the home, she says.

When the house was sold in 2007, the new owners reunited the same companies, with Rich Tagland of

With the bay as the backdrop, spaces flow uninterrupted in the open living areas. "The 21-foot-high ceiling in the living and dining area is flooded with light during the day so you feel as if you are outside," interior designer Jody Zawacki says. At night the space is enhanced with general and fiber-optic lighting — balanced at different elevations — to create a warm and comfortable atmosphere.



A few modifications to the maple cabinetry accommodate a larger stainless steel dual-fuel range for the husband, an avid cook. New Mesa Gold marble countertops reflect the homeowners' sense of style, while new copper inlay tiles provide a finishing touch. Kitchen stools were reupholstered in a fun floral print.

Studio Tagland Designs succeeding his brother, Bill. The open kitchen and living area made it easy to fall in love with the house, the owners say, coupled with the home's signature circular staircase and spectacular waterfront vista. Still, they wanted to make the house their own by personalizing the interior design scheme and reconfiguring various spaces to better suit their family. For instance, one room was converted into a playroom for their son. They also added about 800 square feet to allow room for such features as a home gym and laundry room on the second floor.

Ebb & Flow

Upon entering the home, "everyone is always in awe of the beautiful, airy staircase that rises three floors," Zawacki says.

The railings are made of tubular stainless steel with continuous glass in lieu of regular balusters. Open maple treads follow the curve. It was a challenge, Zawacki explains, because the glass had to have a helix curve to accommodate a turn as well as the rise. "It took us a year to find someone willing and capable of building it," she says. Steel templates were precision built for the laminated glass panels. When you stand under the open staircase and look up, "the impression is a slice of a nautilus shell," Zawacki says.

Sunlight and endless waterfront views animate the interior and accentuate its openness courtesy of a 21-foot-high circular glass wall. All main living areas—kitchen, family room and casual dining area—share a visual connection. "My husband loves to cook," so the spacious



Above: Reminiscent of a ship's bow, a second-floor landing provides a visual break from the lofty living area. The design calls to mind the iconic movie scene from "Titanic" featuring Leonardo DiCaprio and Kate Winslet. "The thrill of floating on the water is the same as when you look out over the bay," Zawacki enthuses. **Below left:** The contemporary façade is defined by geometric elements such as a dramatic two-story portico and a trapezoid shape, the result of a two-story addition. The homeowners can watch the sun rise along the ocean or watch it set on the bay from the "widow's watch" deck on top of the house. "An added pleasure is watching fireworks from as far away as Atlantic City," Zawacki says. **Below right:** Contrasting textures and pops of color play up the visual appeal of the casual sitting area. Crema marfil stone with subtle but rich veining downplays the size of the 21-foot fireplace wall. The raised hearth mimics the curve of the outside wall.





Curved walls and a striking circular staircase distinguish the entryway. Open maple treads appear to float along with tubular stainless steel railings and continuous glass panels. The etched glass design is part of the elevator shaft.



Left: When you stand under the open staircase and look up, “the impression is a slice of a nautilus shell,” Zawacki says. **Right:** Custom teak seats lagged to the wall with collapsible shower seat hardware provide a resting spot at the “widow’s watch” at the top of the staircase. “It’s a great location to watch sunsets on a windy or cold day,” Zawacki says. The curved wall called for custom millwork with a continuous routed line reveal. “It enhances the contemporary architecture of the house,” she says.

kitchen and open layout make it easy for him to be part of the action when preparing meals, the wife says. To accommodate the need for a larger dual-fuel stainless steel range and hood, a few maple cabinets required modification. And to impart their own sense of style, the new homeowners replaced countertops with Mesa Gold marble in rich gold, green and copper tones. New decorative copper inlay tiles—on the backsplash and along the upper perimeter—tie in with the marble, Zawacki says.

Casual Vibe

In their relaxed and carefree lifestyle at the beach, the owners take their meals at the kitchen island or in the casual seating area, where a reclaimed oak table pairs with worry-free Sunbrella fabric cushions in a tropical motif.

They retained the previous owners’ curl-up-and-cozy sofas in the living area and added new rugs and accents to express their love of orange. The lively hue makes a splash on the reupholstered kitchen stools, in throw pillows and on the wife’s favorite wicker chair, where she likes to read, drink coffee or enjoy a glass of wine. “It’s funny because if someone is sitting in the chair and I come into the room, they get up. Everyone knows that’s my chair,” she says lightheartedly. Bright accents and photos of friends and family are found throughout. “I like color and I want our house to make people feel they are walking into part of us,” she says.

Sand, Sea & Sky

The exterior and interior public spaces are painted soft

beige shades reminiscent of sand on the beach. Most ceilings are painted pale blue, “softer than the standard ceiling white” at the beach, Zawacki says. All bathrooms have water or sea-life themes. Like the bedrooms, they are painted in stronger, more personal colors.

Because the first floor has radiant heat, the designer selected herringbone parquet flooring that tends to avert gaps caused by expansion and contraction of the wood, Zawacki says. She chose white maple flooring for two reasons. “It’s a beautiful light sand color that’s not as yellow as regular maple,” she says. The pale shade is also close in value to the Osso travertine floor in the foyer. The change of texture delineates the living area.

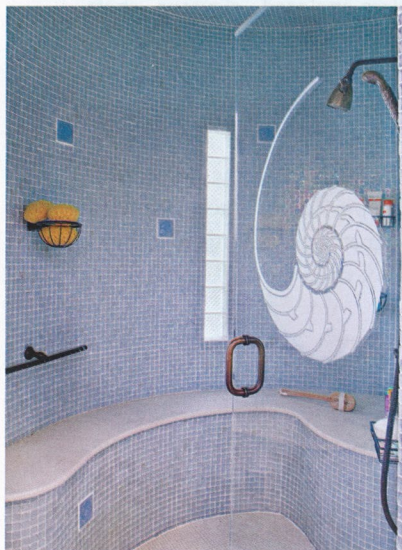
By design, “you can see water from anywhere in the house,” even from the glass-enclosed elevator shaft, Zawacki says. Three panels of glass were used in its construction. The first is a quarter-inch pane etched with the shape of a mermaid. The second panel is a mirror on one side, a see-through pane on the other. This accomplishes two purposes. “The mirror side reflects the water view back into the house and also provides a background for the mermaid image,” the designer says. The third panel is a 1-inch safety glass required by code.

Indoor/Outdoor Connection

To maximize their enjoyment of the waterfront and to extend the living area outdoors, the owners contracted with Mark Reynolds and his team from Reynolds Landscaping and Garden Shop, which is based in Manahawkin and also




Above: The homeowners enjoy the convenience of a first-floor master suite that spills open to the pool and deck. Walls are painted a soft sand tone, and beachy blues are the accent of choice. Cornices in a large-scale print from Ralph Lauren pair with striped cotton sheers from Robert Allen. The rug's geometric pattern "bridges the contemporary architecture of the house" with the current homeowners' preference for a more classic design style, the designer says. A corner fireplace faced in polished Botticino marble (not shown) warms up chilly nights. **Below:** "Curved walls are interesting but can be challenging design-wise," Zawacki says. In the master bathroom custom mosaic vanities and fog-free mirrors follow the rounded wall. The shower and tub areas are oval also. Three long, narrow glass block windows (one shown) bring natural light into the shower. The shower door's etched nautilus sea shell and other features continue the room's sea-life theme.





Top: Blue/green glass tiles and shell-themed insets play up the powder room's ocean theme. Water pours from the wall-mounted "dolphin" faucet into a glass vessel sink chosen for its watery pond effect. Limestone pebble tile — used on the wall's halfway mark — follows the contour of the burgundy-toned glass countertop. **Bottom:** A laundry room was incorporated into a new addition on the second floor, where all the guest rooms are located. Some cabinets were recycled from the original utility room; others were added to fit the tricky room dimensions. (A stackable washer/dryer for laundering beach towels is conveniently located in the garage.) The granite countertop extends into the full height backsplash. A coral shell-patterned window cornice emphasizes the homeowner's favorite accent color.



tain every weekend in the summer," and the backyard meets all our needs, the homeowner says. "The outdoor kitchen is great ... and we sit around the fire pit all the time." With good friends and lots of water sports to occupy their time, "we don't have to leave," she says. 

SOURCES Overall: interior design, Jody Zawacki of Design Continuum in Mountain Lakes; architect, Studio Tagland Designs in Beach Haven Terrace; builder, Thomas J. Keller Building Contractor LLC in Surf City; landscaping, barbecue station, fire pit, ipe decking, gate and other outdoor features, Reynolds Landscaping and Garden Shop in Manahawkin and the firm's studio showroom inside Oskar Huber Furniture & Design in Ship Bottom, in collaboration with Thomas J. Keller Building Contractor LLC; exterior lighting and control system, Tanek Hood of Reynolds Landscaping and Garden Shop. **Living Area:**

has a studio showroom inside Oskar Huber Furniture & Design in Ship Bottom, to design and build such features as an expanded ipe deck for lounging and entertaining.

The space also includes a well-equipped barbecue station, fire pit, upgraded swimming pool and water features. Rows of chaise lounges and umbrellas sport the homeowner's favorite shade of orange, so there's an instant connection between indoors and out. "We enter-

wicker chair and ottoman, Ethan Allen; upholstered sofas near fire-place, Kreiss Corp. in San Diego; assorted pillows and accessories, Between the Sheets LLC in Ship Bottom; motorized Somfy solar shades, designed by Design Continuum and fabricated by Walter Kunzel of Custom Decorators Service in Denville; plants and floral arrangements, Reynolds Landscaping and Garden Shop. **Kitchen:** flooring, herringbone wood parquet from Hoboken Hardwood Floors in Hoboken; cabinetry, original cabinets built by Min Craft in Rockaway, modified cabinets by Handmade Furniture Co. in West Creek; general



© JANEK HOOD/WWW.REVOLUTIONSGARDENSHOP.COM

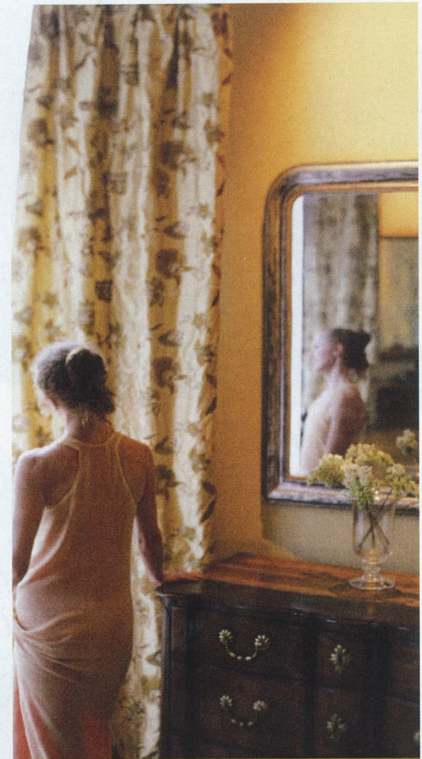
Top: “The husband’s love of cooking and the joy of entertaining inspired the 20-foot-long granite-topped cooking area with a 60-inch round table for friends to visit while he cooks,” Zawacki says. **Bottom, left and right:** The two-story circular façade floods the interior with light and views by day; at night it’s like a beacon to boaters. If they need a break from the beach, guests cool off in the pool and watch the boats along the bay. The expanded ipe deck accommodates multiple seating and dining areas as well as a cozy fire pit for roasting marshmallows.



Acid green walls provide the backdrop for a tropical-inspired guest room furnished with lively leaf-print bedding, zig-zag patterned window treatments and other island accents.



Décor gets nautical in a children's guest room with navy cotton duck valances trimmed in white knotted rope. The room shares a Jack 'n' Jill bathroom with the son's bedroom. Striped bedding introduces orange, yellow and lime green to the color mix.



A Room Without
CURTAINS
 Is Like
 a Poem Without
WORDS.

Curtains | Shades | Hardware | Bedding

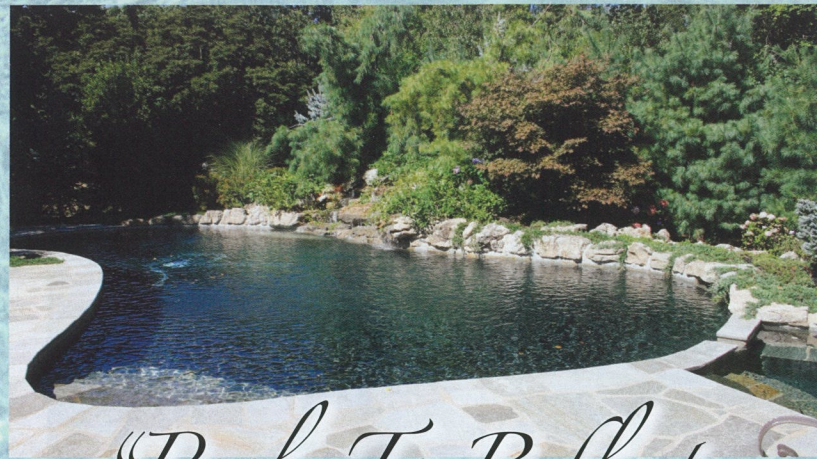
We dress windows from head to toe. From in-home consultations to installation, with us, you won't make a mistake. Create your style with our fabrics, hardware and window accessories.

20 Claremont Road
 Bernardsville, NJ 07924
 908-696-0999

247 E. Ridgewood Avenue
 Ridgewood, NJ 07450
 201-612-0999



THECURTAINEXCHANGE.COM



*"Pools To Reflect
Your Lifestyle"*



*Complete Renovations • Competitive Pricing
Outdoor Kitchens • Cabanas • Landscaping
~ Family Owned & Operated ~
Celebrating over 40 Years*

DISTINCTIVE POOLS, INC.

Morganville, New Jersey • 732-591-1239
www.distinctivepoolsinc.com



A custom gate leads to a private backyard.

This home was featured on the 2009 Seashore Open House Tour, which benefits the Long Beach Island Foundation of the Arts and Sciences. This year's tour will be 10:30 a.m. to 4 p.m. August 3. For details, 609-494-1241 or www.lbifoundation.org.

and fiber-optic lighting, designed by Design Continuum and installed by Phil Hart Electrical Contractor Inc. in Manahawkin. **Breakfast Room:** reclaimed oak table, The Cottage Antiques & The 20th Century in Surf City; wicker seating, Oskar Huber Furniture & Design. **Front Exterior:** stainless steel lanterns, The American Glass Light Co. in Newburgh, New York. **Foyer:** staircase, designed by Studio Tagland Designs and Design Continuum; curved glass and stainless steel railing, New Star Brass & Bronze Works Inc. in Brooklyn; white maple staircase treads, Iacovelli Stairs Inc. in Forked River; flooring, Osso travertine; etched glasswork here and throughout, Supplies at Stained Glass in Lodi. **Powder Room:** faucet, THG natural brass



Facing the pool or bay, a row of chaise lounges welcomes sun or shade.

wall-mounted dolphin, The Imaginative Design Center in Bedminster; glass vessel sink, Alchemy Glass. **Widow's Watch:** custom teak seating, designed by Design Continuum and fabricated by Min Craft. **Master Bedroom:** bedside tables, Hekman; fabric on cornices, Ralph Lauren; cotton sheers, Robert Allen/ Beacon Hill; bedding, Between the Sheets; wool area rug, J&S Designer Flooring in Morristown. **Master Bathroom:** oil-rubbed fixtures, THG from The Imaginative Design Center; crema marfil marble on floor, tub deck and countertops, fabricated by Take It 4 Granite in Flanders; glass and mirrors, installed by G. Lee Sales in Tuxedo Park, New York; swag valance, Sonia's Place Inc. (T) in New York City. **Laundry Room:** cabinetry, Handmade Furniture Co. **Outdoor Room:** furniture, Cast Classics and Frontgate; umbrellas, Restoration Hardware; pool, Mitchell Chambers, owner of Jersey Coast Pools in Belleplaine and Harvey Cedars. **Tropical Guest Room:** window treatment fabric by Alan Campbell, fabricated by Custom Decorators Service in Denville; bedding, Pine Cone Hill through Between the Sheets. **Nautical Guest Room:** wall paint, Rhinestone by Sherwin Williams; bedding, Pine Cone Hill through Between The Sheets; white furniture, Crate & Barrel. T = To The Trade.

For contact information, page 124

THE NUMBER ONE SOURCE FOR FURNITURE & RUGS FOR INTERIOR DESIGNERS IN NORTHERN NEW JERSEY

benjamin RUGS & FURNITURE

AMAZING SELECTION OF HAND MADE RUGS IN ALL SIZES, STYLES & COLORS

CUSTOM STAIR RUNNER INSTALLATION & CUSTOM RUGS



INTERIOR DESIGN SERVICE AVAILABLE

201.617.9000 • benjaminrugandhome.com

20 MEADOWLANDS PKWY • SECAUCUS, NJ

MONDAY - SATURDAY 10 - 6 • SUNDAY 12 - 5

- Stanley Furniture
-
- Bernhardt
-
- Hickory White
-
- Sherrill Occasional
-
- Universal Furniture
-
- Lexington Home Brands
-
- C R Laine
-
- Butler Speciality Company
-
- Hickory Chair
-
- Hooker Furniture
-
- Bradington Young
-
- Theodore Alexander
-
- Elite Leather Company
-
- Ferguson Copeland Ltd.
-
- Taylor King



CENTURY BATHWORKS, INC.

Quality and Innovation for Your Bathroom

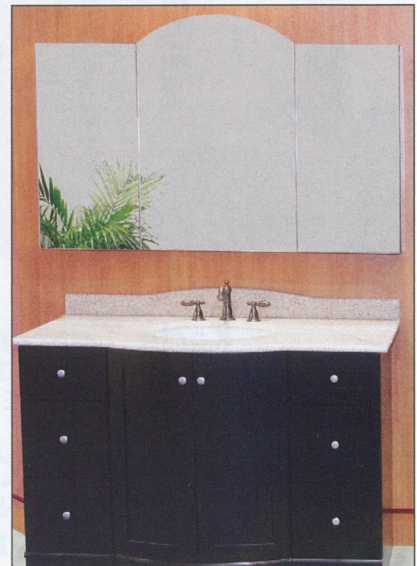
BRASSLINE CENTURY SHOWER DOOR

Century provides the widest variety of styles, glass options, hardware options, and finish options resulting in the perfect shower or tub enclosure for your home.



MEDICINE CABINETS

Century's high quality cabinets are available in multiple heights, widths, & colors or custom sizes. Electric option includes electrical outlets inside and an anti-fog door mirror.



Visit us at www.centurybathworks.com or call 1-800-524-2578 for a dealer near you